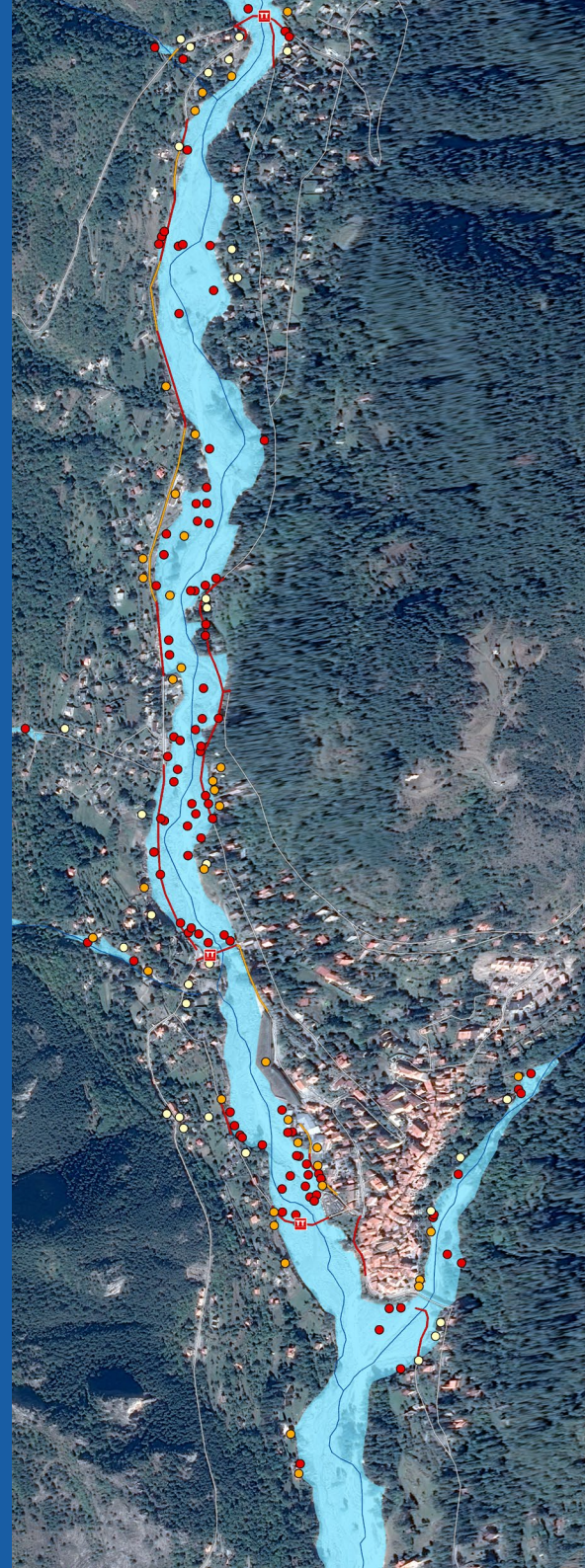


RAPID MAPPING

Natural disasters, humanitarian
and technological crises
Earth Observation

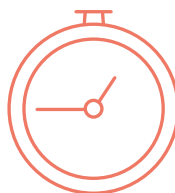


THE SERVICE

Delivery of information relating to:

- location and extent of an event
- event monitoring
- assessment of human and material impacts

from spatial imagery and exogenous data



Operational 24/7/365, a team capable of producing geographic information in a few hours on several affected areas



An ISO 9001 certified service

GOALS

Production of geographic crisis information on the extent and impact of a natural, technological or humanitarian disaster.

At regional, national, and global levels



FOR WHO ?

Civil protection,
NGOs,
insurance industry,
financial institutions,
risk and natural resource managers,
regional planning, ...

CHARACTERISTICS

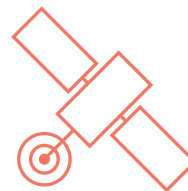
Production time: rush mode (few hours, days), standard mode (weeks)

Product format: raster / vector

Scale: on demand

Source data: satellite, topographic and socio-economic data

Price: Please contact us



CONTACT

Parc d'Innovation
300, bd Sébastien Brant
67412 Illkirch-Graffenstaden
FRANCE

Stephen CLANDILLON: s.clandillon@unistra.fr

Stéphanie BATTISTON: s.battiston@unistra.fr

<https://sertit.unistra.fr/>

REFERENCES

International Charter Space & Major
Disasters, Copernicus EMS Rapid
Mapping, CNES VA Pléiades, CCR, AXA
CYMO, ...

