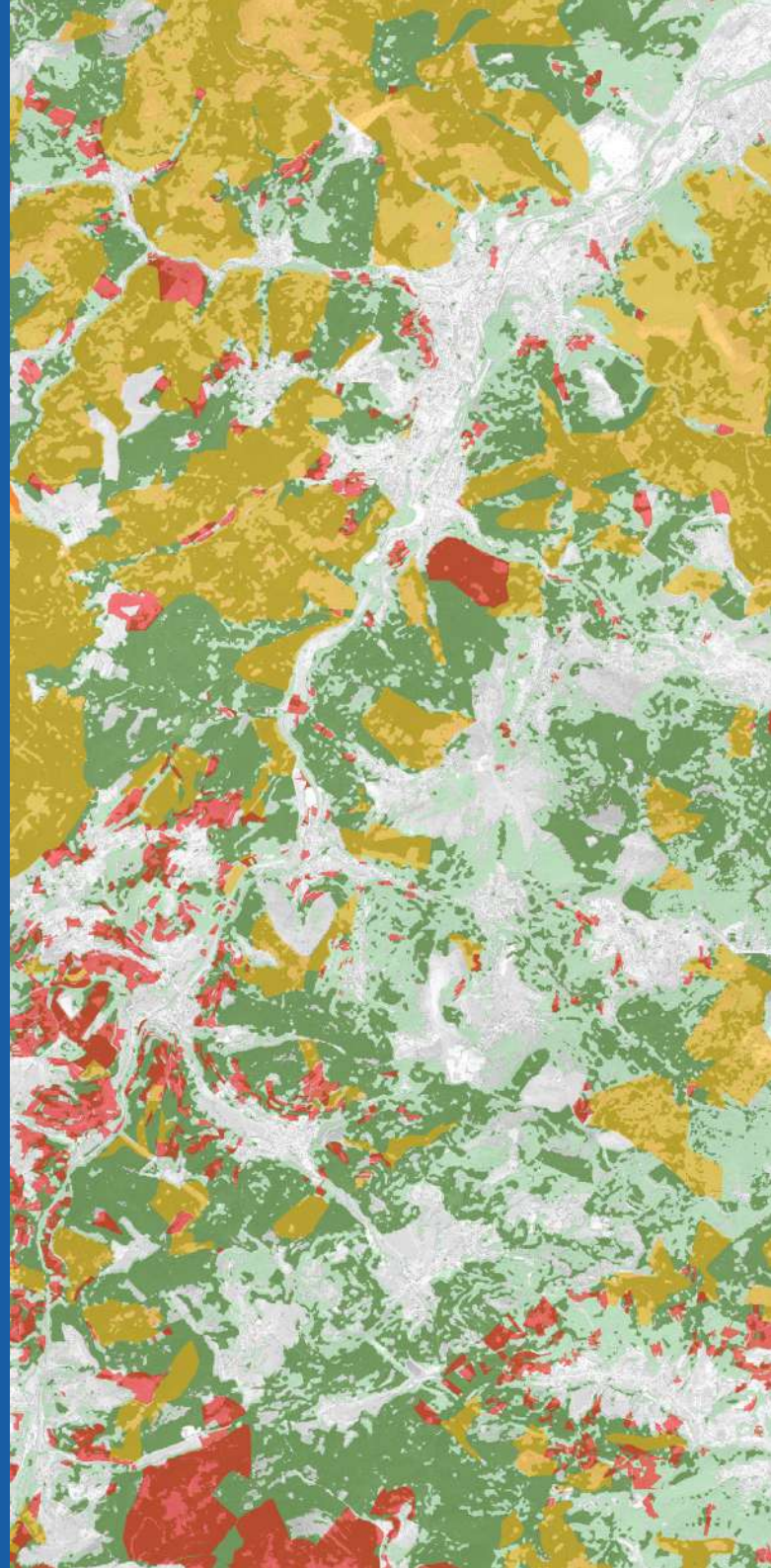


# CLEAR CUTS

---

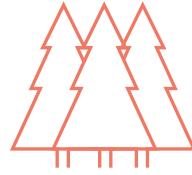
Forest  
Clearings  
Deforestation  
Green Infrastructure  
Landed  
Resource  
Sustainable Development



# THE PRODUCT

---

Detection of clear cuts in the forests  
Establishment and control of forest land



Gain in quality and efficiency  
for the implementation  
of procedures and the  
evaluation of public policies

## GOALS

---

Preservation of forest land  
Regular monitoring of forest cover  
Implementation of sustainable development planning tools  
Assessment and monitoring of green infrastructure  
Preservation of biodiversity at local levels  
Sensitise stakeholders in the sector to preserve forest resources  
through monitoring action plans

## CHARACTERISTICS

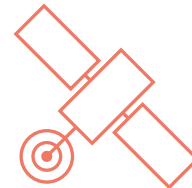
---

Production time: standard mode (weeks)  
Product format: raster / vector  
Scale: local to regional  
Source data: satellite images, forest data  
Price: Please contact us

## FOR WHO ?

---

Institutional and local authorities,  
deconcentrated state services,  
development agencies,  
land use and environmental managers, ...



## REFERENCES

---

REGIOWOOD II (INTERREG VA),  
Foncier forestier (DRAAF Grand-Est), CRPF  
Grand-Est (CARTEFOR), ...

## CONTACT

---

Parc d'Innovation  
300, bd Sébastien Brant  
67412 Illkirch-Graffenstaden  
FRANCE

**Henri GIRAUD:** [henri.giraud@unistra.fr](mailto:henri.giraud@unistra.fr)  
**Thomas LEDAUPHIN:** [tledauphin@unistra.fr](mailto:tledauphin@unistra.fr)  
<https://sertit.unistra.fr/>



Sertit

iCUBE